

MONTHLY MEMBERSHIP PROGRESS REPORT

District 26 M3

Results as of: 3/31/2024

GMT:

LOCATION MISSOURI

GMT CA

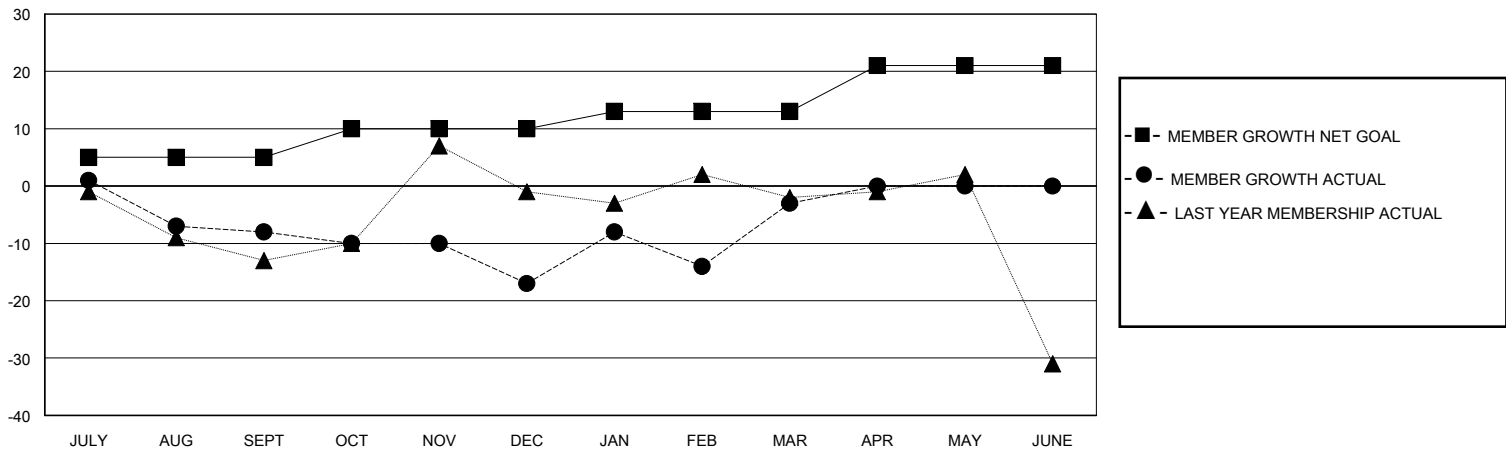
Clubs			
RESULTS FOR 2023-2024			
QUARTER	NEW CLUB GOAL	NEW CLUBS	DROPPED CLUBS
JULY/AUG/SEPT	0	0	0
OCT/NOV/DEC	1	0	1
JAN/FEB/MAR	0	0	1
APR/MAY/JUNE	0	0	0

Members			
RESULTS FOR 2023-2024			
QUARTER	MEMBER GROWTH NET GOAL	MEMBER GROWTH ACTUAL	DROPPED MEMBERS ACTUAL (including transfers)
JULY/AUG/SEPT	5	21	26
OCT/NOV/DEC	5	18	27
JAN/FEB/MAR	3	44	30
APR/MAY/JUNE	8	0	0

GOALS AND ACTUAL NEW CLUBS CUMULATIVE



GOALS AND ACTUAL MEMBERS CUMULATIVE



DROPPED CLUBS: 2	24 CLUBS OF 52 ADDED 1 OR MORE NEW MEMBERS	GENDER DISTRIBUTION MALE 765 (70.96%) FEMALE 313 (29.04%)
DROPPED MEMBERS DECEASED 18 CLUB CANCELLED 12 OTHER 53 TOTAL 83	CLICK HERE FOR CUMULATIVE MEMBERSHIP DATA	TOTAL FAMILY UNIT MEMBERS 96 FAMILY MEMBERS PAYING HALF DUES 49